

# MIDWEST FLOOD CONTROL ASSOCIATION

JUNE 18, 2026

COL Andy Pannier  
District Engineer  
St. Louis District



U.S. ARMY



US Army Corps  
of Engineers®



U.S. ARMY

# AGENDA



- Middle Mississippi Navigation
- Preparing for the Next Great Flood
- Current Actions in our AO
- Addressing Infrastructure Challenges with our Levee Partners





U.S. ARMY

# MIDDLE MISSISSIPPI RIVER NAVIGATION



Grafton-Mississippi

## UMR 300-195, Upper River

Cubic Yards Dredged:

**2.0M**

Goetz: 125k

Potter: 1.9M

Pathfinder: 15k



## UMR 195-0, Middle Miss

Cubic Yards Dredged:

**3.6M**

Goetz: 113k

Potter: 3.5M

Pathfinder: 50k



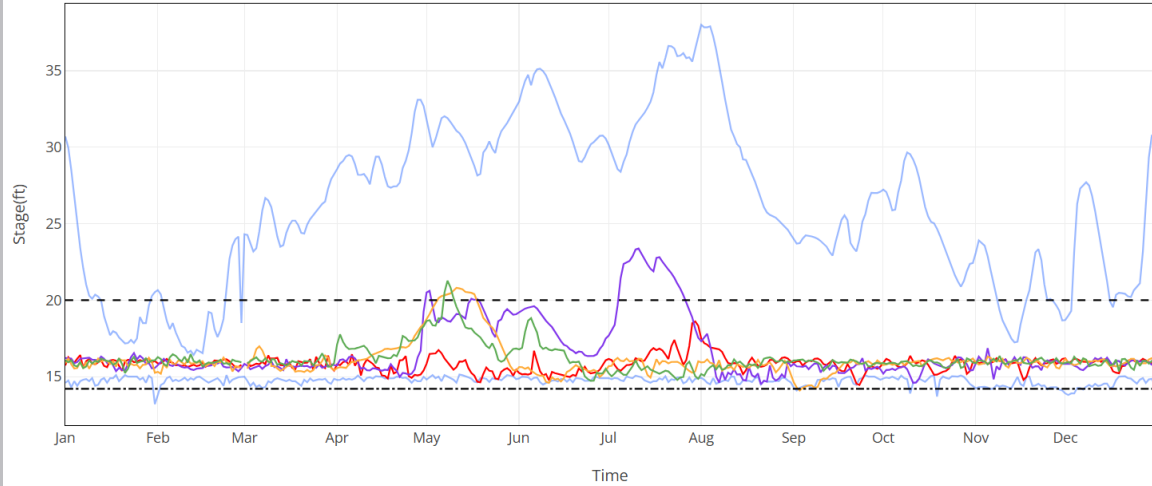
### 4 Year Trend

**2022 – 9.5M CY**

**2023 – 8.1M CY**

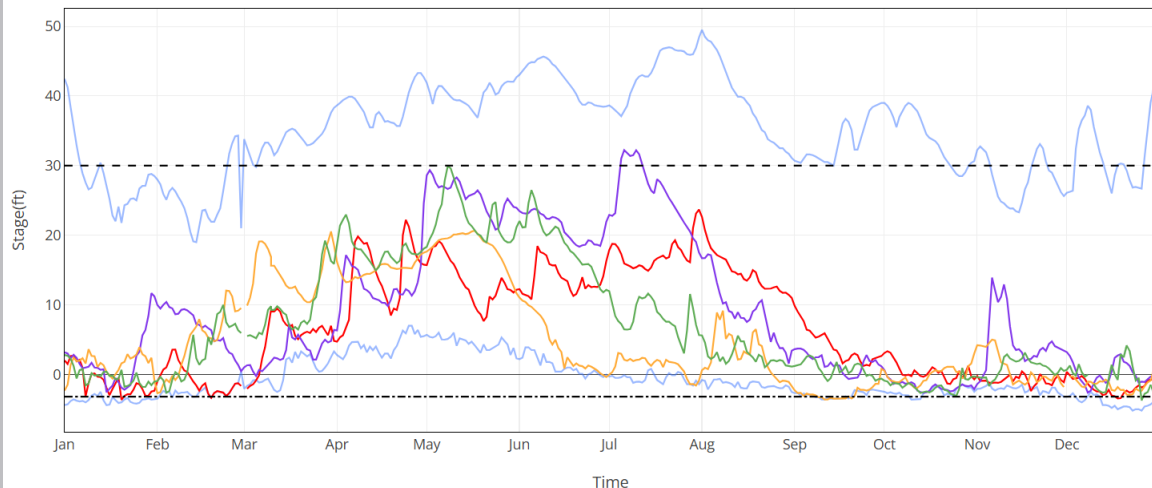
**2024 – 5.6M CY**

**2025 – 5.5M CY**



— Max & Min (1967 - 2025) — Year 2025 — Year 2024 — Year 2023 — Year 2022 - - - Flood Stage - - - LWRP

St Louis-Mississippi



— Max & Min (1967 - 2025) — Year 2025 — Year 2024 — Year 2023 — Year 2022 - - - Flood Stage - - - LWRP



U.S. ARMY

# PREPARING FOR THE NEXT GREAT FLOOD

## Reconstruction of Aged Drainage and Levee/Floodwall Structures

- ✓ Wood River Lower
- ✓ St. Louis Protection System
- ✓ East St. Louis (MESD)
- ✓ Cape Girardeau Floodwall

## Remediation of Uncontrolled Levee Underseepage

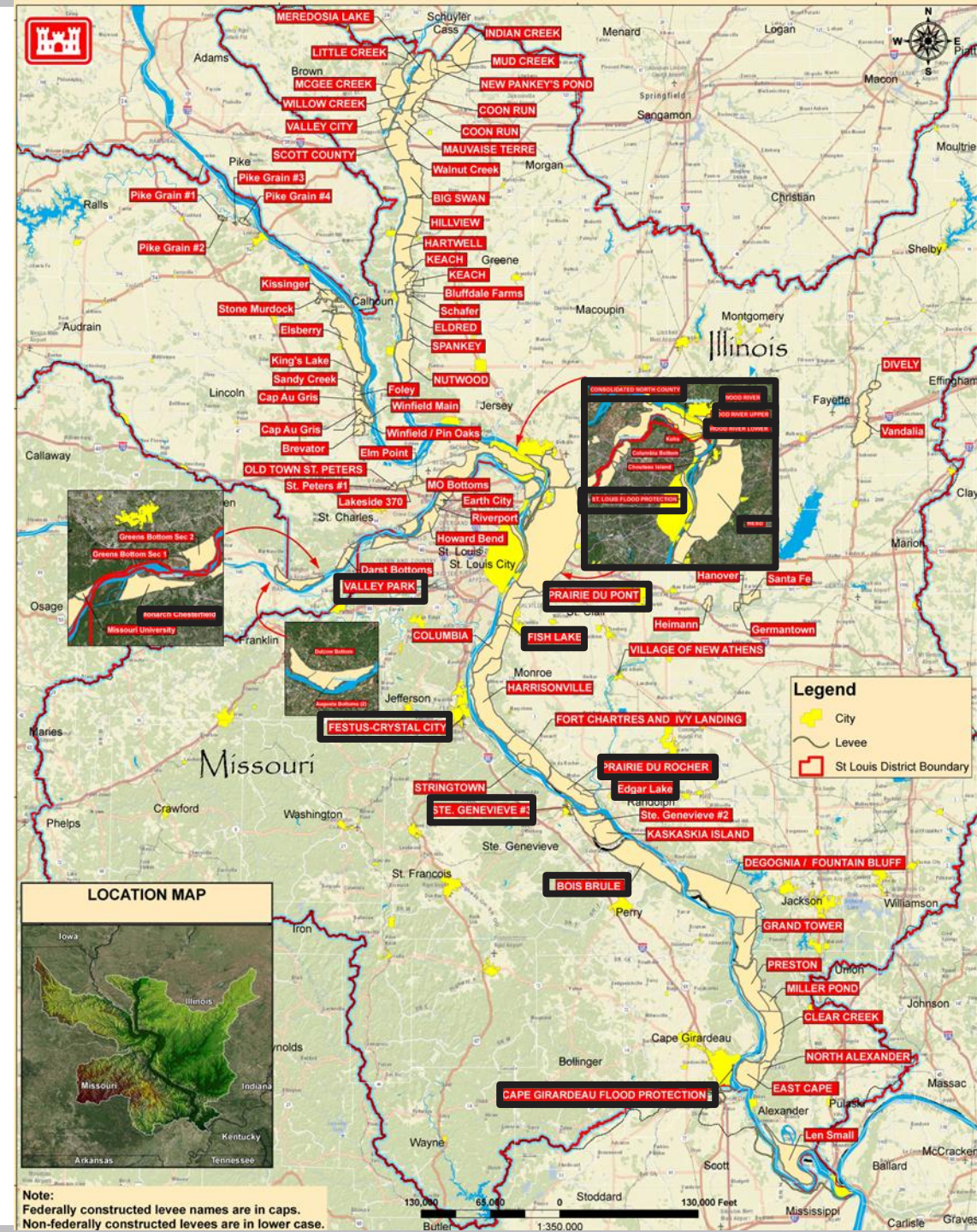
- ✓ Chain of Rocks
- ✓ Wood River Upper (Mel Price)
- ✓ St. Louis Flood Protection System
- ✓ Cape Girardeau Floodwall
- ✓ Bois Brule
- East St. Louis Funded to Completion
- Wood River Lower Funded to Completion
- Prairie du Pont and Fish Lake Local Sponsor Funded

## Raising or Widening Levees

- ✓ Missouri River L15 / Consolidated North County
- ✓ Prairie du Rocher and Edgar Lakes
- ✓ Monarch-Chesterfield

## New USACE Constructed Levees

- ✓ Festus/Crystal City
- ✓ Ste. Genevieve #3
- ✓ Valley Park





U.S. ARMY

# COLUMBIA BOTTOM CONSERVATION AREA



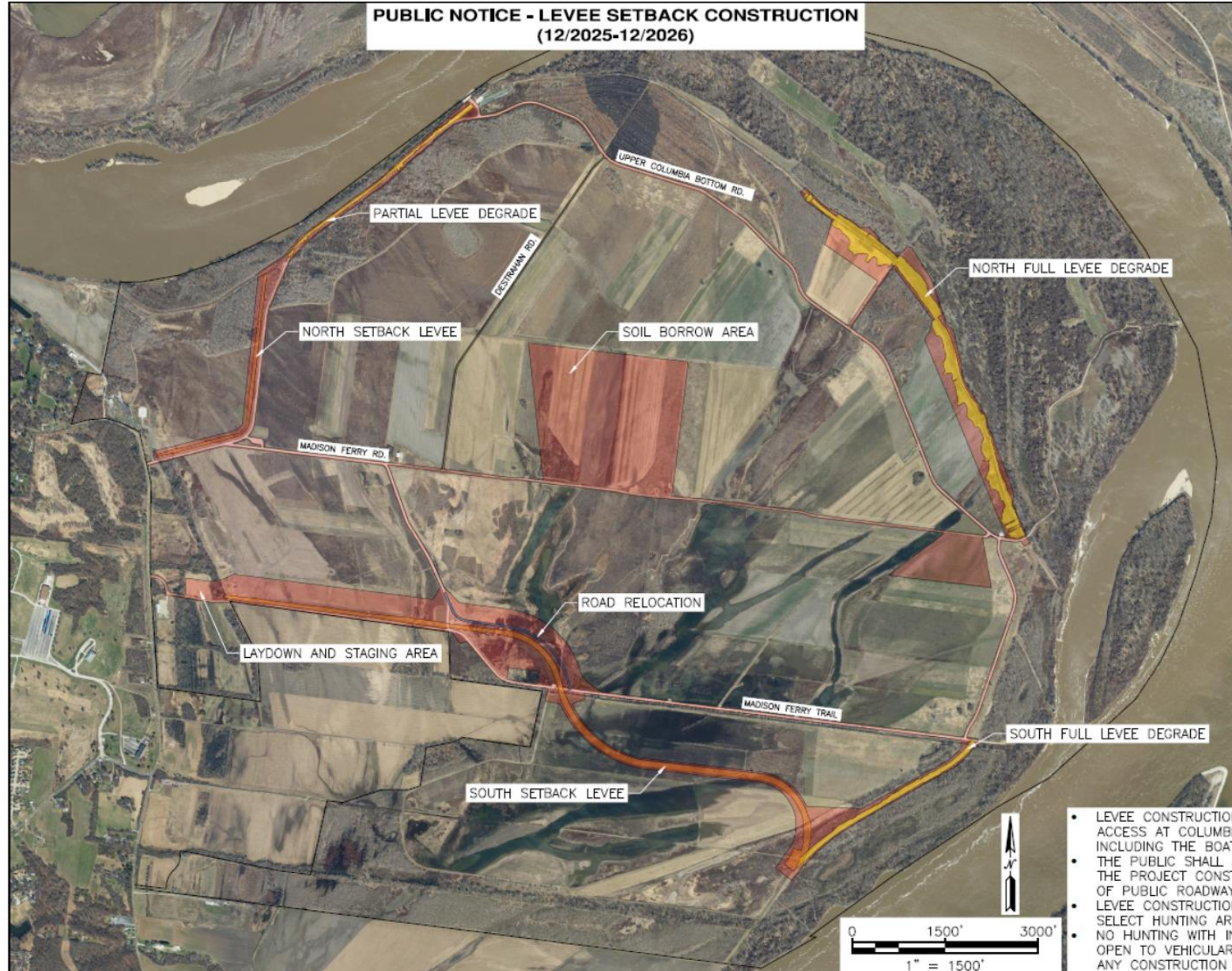
Serving nature and you

MISSOURI DEPARTMENT OF CONSERVATION

PO BOX 180, JEFFERSON CITY, MO 65102  
573-522-4115 www.mdc.mo.gov

### LEGEND

- CONSTRUCTION LIMITS
- NEW SETBACK LEVEE
- LEVEE DEGRADE
- ROAD RELOCATION



- LEVEE CONSTRUCTION WILL IMPACT AND LIMIT PUBLIC ACCESS AT COLUMBIA BOTTOM CONSERVATION AREA, INCLUDING THE BOAT RAMP AT TIMES.
- THE PUBLIC SHALL AVOID ALL AREAS REFLECTED WITHIN THE PROJECT CONSTRUCTION LIMITS, WITH THE EXCEPTION OF PUBLIC ROADWAYS.
- LEVEE CONSTRUCTION WILL DISTURB LOCAL WILDLIFE AND SELECT HUNTING AREAS MAY BE CLOSED.
- NO HUNTING WITHIN 100 FEET OF ANY TRAIL OR ROAD OPEN TO VEHICULAR TRAFFIC, OR WITHIN 100 YARDS OF ANY CONSTRUCTION AREA.

**Sponsor:** MO Department of Conservation

**Location:** Confluence of the Missouri and Mississippi Rivers

**Planning:** MAY 2022 - JUN 2023

**Design:** JAN 2024 - JUL 2025

**Construction:** DEC 2025 – DEC 2026

**Reconnects:** 2,400 acres

### Levee Degrades (three) for 2.75 Miles

- Partial levee degrade along the MO River
- Full degrades along the Mississippi River

### Levee Setbacks (two)

- North Section (6,480 LF)
- South Section (3,270 LF)



2019 Flood. Overtopped 10 times in 50yrs



U.S. ARMY

# STRINGTOWN LEVEE SCOUR

**2010** Scour First Observed on Aerial Imagery



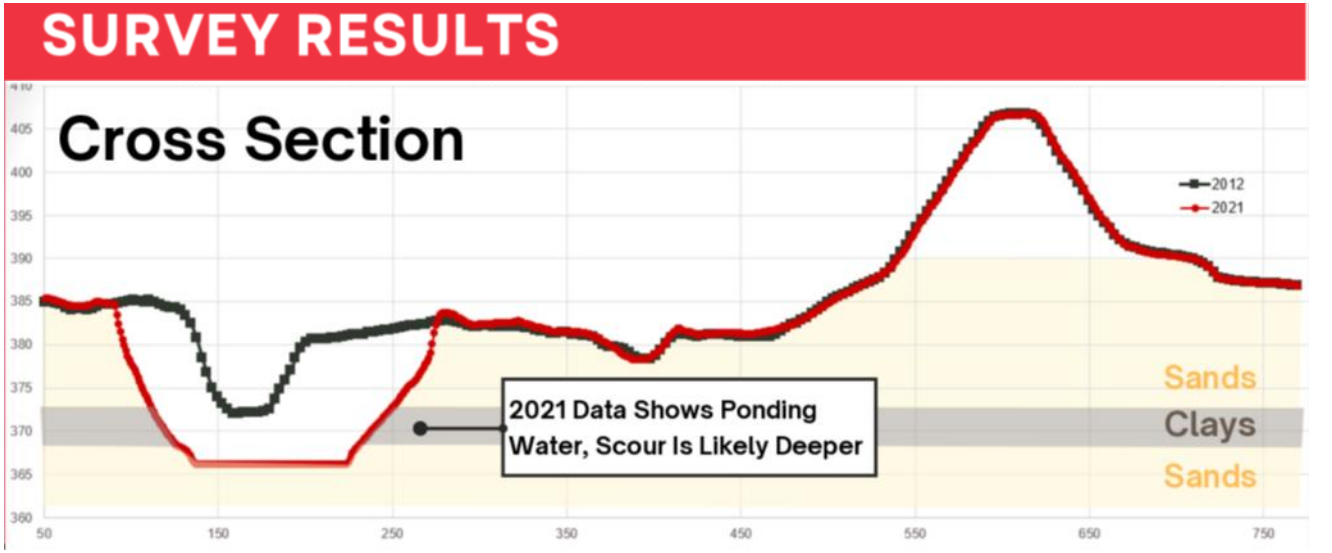
**2013** Reported to USACE in November



**2022** Site Visit Measured Scour Progressed 350' Upstream



**2024** Scour Approximately 185' From Levee Toe & Greater Than 15' Deep





U.S. ARMY

# STRINGTOWN LEVEE SCOUR REPAIR

- December 2025 work completed
- Project cost of \$413,000 funded by Monroe County with Work In-kind by the levee district
- Backfilled scour area with roughly 95,000 cubic yards of material.



County Board Chairman Green Photograph by Riverbender.



Photograph taken by Republic Times News Paper.



County Officials and Levee District with recognition of completed project photo by Republic Times.





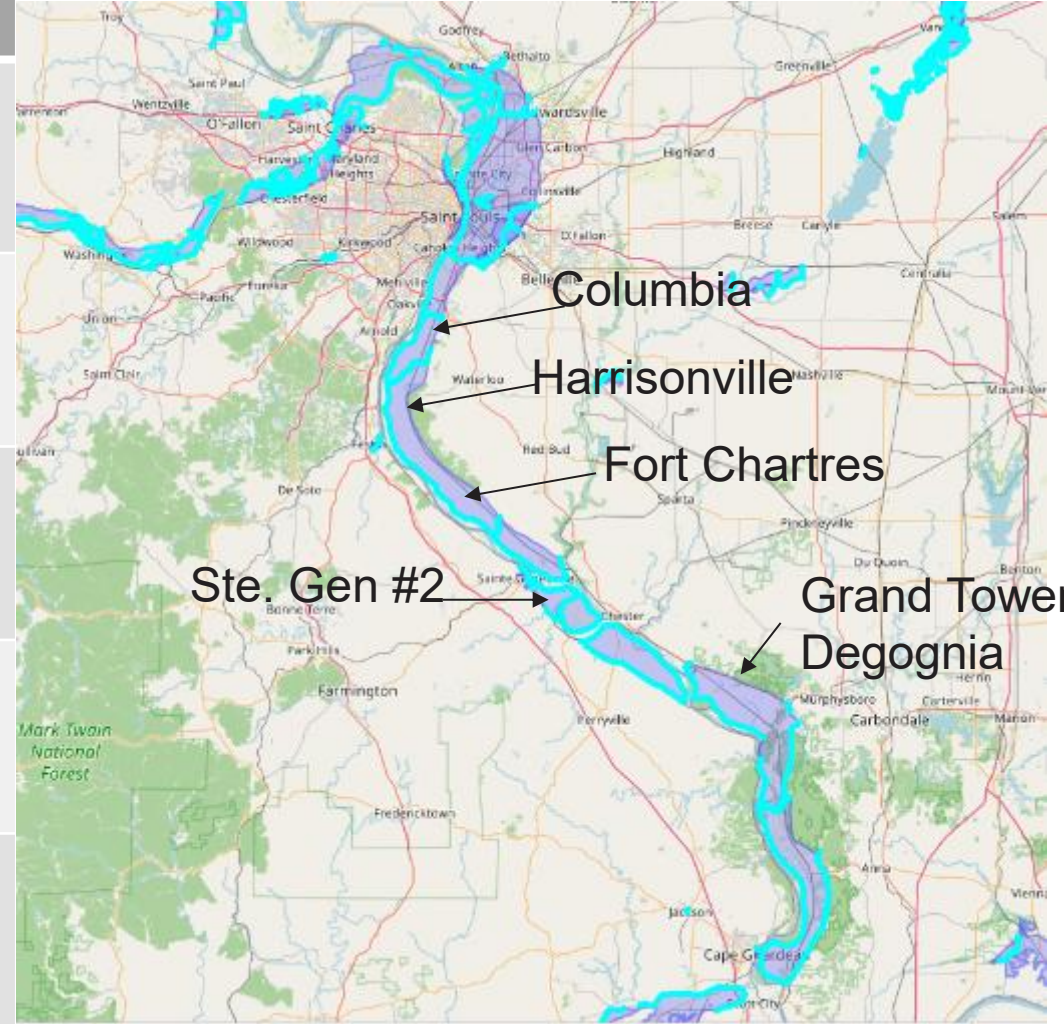
U.S. ARMY

# PL84-99 REHABILITATION



## Projects Status:

Project	PIR Approval	Current Status (Task, end)	Next Step (Task, end)	Award
Ft. Chartres	12-SEP-25	PIR Approved	Design Phase	FY27
Harrisonville	23-SEP-25	PIR Approved	Design Phase	FY27
Columbia	17-OCT-25	PIR Approved	Design Phase	FY27
Grand Tower	17-OCT-25	PIR Approved	Design Phase	FY27
Ste. Gen #2	20-OCT-25	PIR Approved	Design Phase	FY27

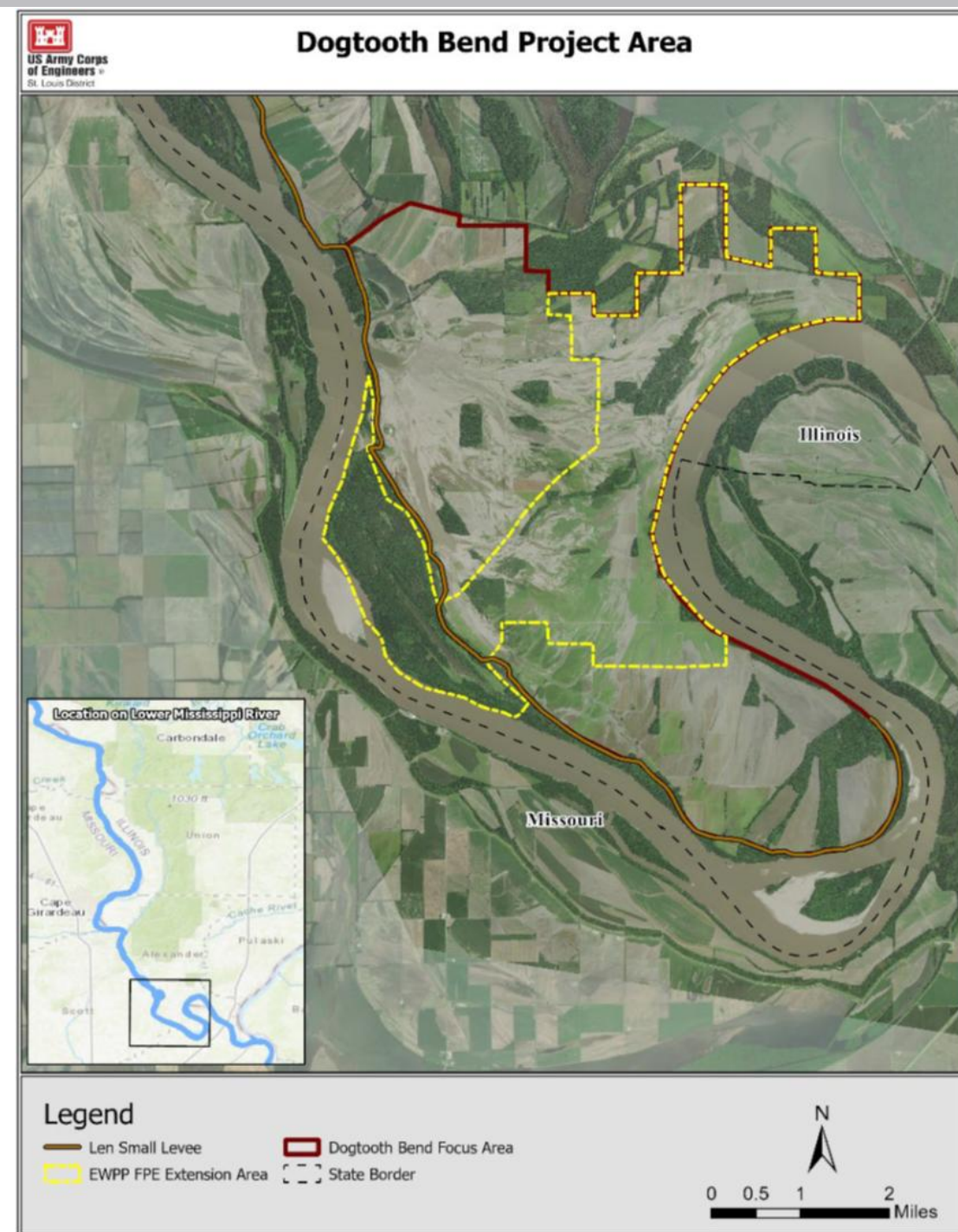




U.S. ARMY

# LEN SMALL LEVEE/ DOGTOOTH BEND REACH

- Len Small LD is a non-Federal Agricultural Levee
- Open system reducing risk from headwater flooding but subject to backwater flooding
- Levee is compromised by a breach measuring 5,300 feet
- Repair cost of \$16.6M (2016)
- BCR < 1 could not justify structural rehabilitation
- 2019 Flood resulted in downstream erosion of the bankline
- NRCS secured funds to help private landowners with the purchase of easements and implement wetland/bottomland restoration.
- 2020 USACE installed rock overflow structure to reduce channel cutoff.
- Ducks Unlimited and TNC acquiring residual value of land for transfer to Middle Mississippi National Wildlife Refuge
- USACE working with the levee district on a non-structural project (water deflection **or** road hardening alternative)





U.S. ARMY

## ADDRESSING INFRASTRUCTURE CHALLENGES WITH OUR LEVEE SPONSORS

10



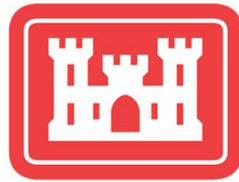
- Directly engaging levee sponsors in USACE Levee Safety Program activities (inspections, risk assessment and risk communication)
- Emergency preparedness and action planning
- Emergency response (flood fight)
- Post flood rehabilitation assistance (PL84-99)
- Focused on finding solutions to solving your infrastructure challenges



**LOCAL NEWS**  
**Levee District Secures \$300,000 Federal Loan for Relief Well Project in Jackson County**



# FOR MORE INFORMATION



**US Army Corps  
of Engineers®**  
St. Louis District

-  [Facebook.com/TeamSaintLouis](https://www.facebook.com/TeamSaintLouis)
-  [Twitter.com/TeamSaintLouis](https://twitter.com/TeamSaintLouis)
-  [Youtube.com/TeamSaintLouis](https://www.youtube.com/TeamSaintLouis)
-  [Instagram.com/TeamSaintLouis\\_USACE](https://www.instagram.com/TeamSaintLouis_USACE)
-  [linkedin.com/company/us-army-corps-of-engineers-st-louis-district/](https://www.linkedin.com/company/us-army-corps-of-engineers-st-louis-district/)
-  [mvs.usace.army.mil](https://mvs.usace.army.mil)
-  [teamstl-pao@usace.army.mil](mailto:teamstl-pao@usace.army.mil)

